

# Metric Forrest STUDIO

1146 East Washington Ave

Madison, WI 53704

608-255-9080

## Eclectic Earth

[Metricforreststudio.com](http://Metricforreststudio.com)

2020 Catalog

[orders@metricforreststudio.com](mailto:orders@metricforreststudio.com)



Free Display with

\$1500 order

Includes \$153 pairs



Free Display with

\$1000 order

Includes 103 pairs



ee0703  
Mojito

\$7.00

Antiqued brass earwire  
Oxidized brass leaf charm  
with faceted glass bead.  
Colors vary.  
Length: 1 3/4"



ee0708  
Baraboo

\$7.00

Gold-plated ball earwire.  
Etched and patinated copper  
oval and jumpring. Smooth  
brass oval.  
Length: 1"



ee0710  
Florence

\$7.00

Gold-plated earwire and  
patinated filigree fan.  
Faceted glass bead. Bead  
colors vary.  
Length: 1 3/4"



ee0711  
Arrack Attack

\$7.00

Silver-plated earwire.  
Silver-plated wire with  
faceted crystal cube bead.  
Colors vary.  
Length: 2"



ee0712  
Hot Toddy

\$7.00

Gold-plated earwire. Faceted  
glass bead with gold-plated  
components. Colors vary.  
Length: 2"



ee0714  
Birthday Cake

\$7.00

Gold-plated earwire.  
Brass rectangle and etched  
copper strip with studio  
colored patinas.  
Length: 2"



ee0715  
Zinnia (New)

\$7.00

Gold or silver plated earwire  
with mismatched charms.  
Length: 2.5"



ee0716  
Magnolia (New)

\$7.00

Silver-plated earwire with  
silver-plated, hammered  
wire. Etched nickel charm  
with inked patina. Colors  
vary.  
Length: 2 1/4"



ee0805  
Waterloo

\$8.00

Gold-plated earwire, circle,  
headpin and jumprings.  
Silver plated circle. Bicone  
Swarovski crystal. Colors  
vary.  
Length: 1 3/8"



ee0806  
Cumberland

\$8.00

Silver-plated earwire and  
jumprings. Blue patinated  
brass filigree leaf. Silver  
pinecone charm.  
Length: 1 1/2"



ee0807  
Darlington

\$8.00

Silver-plated earwire,  
headpin, jump ring and  
diamond component. Natural  
pearl. Colors vary.  
Length: 1"



ee0808  
Shullsburg

\$8.00

Antiqued copper earwire.  
Studio etched and patinated  
copper circles. Glass pearl.  
Pearl colors vary.  
Length: 1"



ee0809  
Leaf Cutter

\$8.00

Brass kidney earwire. Patinated brass charm with glass bead. Colors vary Length: 2 1/4"



ee0811  
Halle

\$8.00

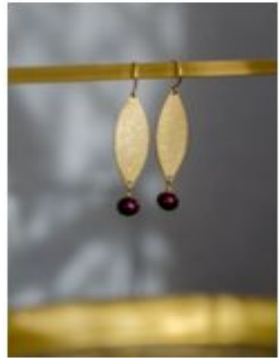
Silver-plated earwire. Nickel silver circle, silver jumpings with colored resin charm. Colors vary. Length: 3/4"



ee0813  
Bourbon Praline

\$8.00

Gold-plated earwire. Etched brass. Natural pearl. Pearl colors vary. Length: 1"



ee0814

\$8.00

Primrose (New)  
Gold-plated earwire with frosted brass charm and pearl bead. Colors vary. Length: 2"



ee0907

Wisconsin Rapids

\$9.00

Gold plated earwire. Brass teardrop charm. Glass bead colors vary. Length: 1 1/8"



ee0908  
Bloomfield

\$9.00

Surgical steel earwire and leaf component. Natural pearl. Colors vary. Length: 7/8"



ee0910  
Crystal Lake

\$9.00

Sterling earwire. Hand blown lampwork glass bead. Colors Vary. Length: 7/8"



ee0911  
Gal

\$9.00

Gunmetal earwire. Antiqued silver etched chain, xillion crystal pendant and gunmetal jumping. Length: 1 1/2"



ee0912  
Sigourney

\$9.00

Gold-plated earwire. Gold-plated jumpings with glass beads. Colors vary. Length 1 1/2"



ee0913

Lemon Ice

\$9.00

Gold-plated earwire. Studio etched brass charm. Enameled colored charm. Colors vary. Length: 2"



ee0914

Brownie Twist

\$9.00

Gold-plated ball post earwire and components. Studio etched and patinated copper charm. Length: 1"



Ee0916  
Sunflower (New)

\$9.00

Gold-plated earwire with enameled circle. Colors vary. Length: 1 1/4"



ee1010  
DeForest

\$10.00

Antiqued brass earwire and filigree leaf. Enameled leaf in variegated colors. Colors vary. Length: 2 1/2"



ee1013  
Reese

\$10.00

Silver-plated earwire. Hand hammered nickel silver teardrop with gemstones. Colors vary. Length: 1"



ee1014  
Jennifer

\$10.00

Rose gold-plated ball earwire. Hammered nickel silver rectangle, faceted gemstones Colors vary. Length: 1"



ee1015  
Strawberry Swirl

\$10.00

Silver-plated earwire and components. Nickel and studio patinaed copper charms. Colors vary. Length: 1 3/4"



ee1016  
Rum Raisin

\$10.00

Niobium earwire. Brass charm and studio etched copper strip with patina. Colors vary Length: 2"



ee1017  
Cheesecake

\$10.00

Niobium earwire. Studio etched and enameled copper charm. Gemstone or czech glass bead. Colors vary. Length: 2 1/2"



ee1018  
Allium (New)

\$10.00

Gold-plated earwire with gold-plated chain and pom-pom charm. Colors vary. Length: 2"



ee1019  
Violet (New)

\$10.00

Silver plated earwire with faceted glass bead. Colors . Length: 1 1/4"



ee1202  
Patron Silver

\$12.00

Silver-plated earwire. Hammered sterling silver teardrop. Length: 1 1/4"



ee1205  
Tree of Life

\$12.00

Natural niobium earwire. Pewter charm, assorted glass color beads. Length: 1 1/2"



ee1211  
Fond du Lac

\$12.00

Silver-plated earwire. Studio enameled copper pieces. Colors vary Length: 1 1/4"



ee1216  
Tutti Frutti

\$12.00

Antiqued brass long earwire. Gold dipped manufactured feather. Colors vary. Length 2"



ee1217  
Dulce De Leche

\$12.00

Sterling silver earwire.  
Nickel silver and copper  
charms.  
Length: 1 1/2'



ee1218  
Wildflowers (New)

\$12.00

Antique brass earwire with  
etched copper and painted  
charm. Colors vary. Length: 2  
1/4"



ee1219  
Fern (New)

\$12.00

Antique brass earwire with  
resin and wood charm.  
Colors vary. Length: 2"



ee1220  
Posey (New)

\$12.00

Rose gold earwire.  
Enameled moon with copper  
star charm. Colors vary.  
Length: 1 1/4"



ee1413  
Piper

\$14.00

Antiqued sterling silver  
earwire. Faceted moonstone  
bead.  
Length: 1 1/4"



ee1416  
Rocky Road

\$14.00

Rhodium or gold-plated  
hoop earwire. Gemstone  
bead. Colors vary.  
Length: 1"



ee1417  
English Toffee

\$14.00

Gold-filled post earwire and  
components. Resin charm.  
Colors vary.  
Length: 2"



ee1421  
Tangled Teardrop

\$14.00

Gold-plated earwire. Copper  
and gemstone accent beads.  
Gemstone teardrop bead.  
Colors vary.  
Length: 1.5"



ee1422  
Flora (New)

\$14.00

Silver-plated earwire with  
chain and glass flower bead.  
Colors vary.  
Length: 2 1/2"



ee1423  
Peony (New)

\$14.00

Brass or rose gold plated  
earwire. Shaped, hammered  
and soldered brass or copper  
wire. Choose copper or  
brass style. Length: 2"



ee1606  
Arcadia

\$16.00

Matte gold-plated earwire  
and leaf component.  
Length: 1 1/4"



Ee1610  
Tina

\$16.00

Rose gold-plated or  
gold-plated lever-back  
earwire. Tassel is Afghan  
jade beads. Colors vary.  
Length 3 1/4"



ee1611  
Spumoni

\$16.00

Gold-filled post earwire.  
Carnelian & moss agate  
gemstone. Turquoise colored  
bead. Colors vary.  
Length: 2 1/4"



ee1613  
Sage (New)

\$16.00

Antique brass post earwire,,  
brass, nickel and copper  
charms.  
Length: 2"



ee1614  
Lily (New)

\$16.00

Gold-plated earwire with  
textured and matte finished  
brass.  
Length: 2"

*Metric Forrest*  
STUDIO

1146 East Washington Ave

Madison, WI 53704

608-255-9080

**Eclectic Earth**

Metricforreststudio.com

2020 Catalog

orders@metricforreststudio.com